

MyLab™ PANTHER

Access to Power



esaote VET
HEALTH WITH CARE

MyLab™ **PANTHER**

Access to Power

Just as the panther embodies grace, precision and unparalleled power, the new MyLab™ Panther delivers exceptional quality, reliability and efficiency in veterinary diagnostic imaging.

With a clear focus on animal care and productivity, at Esaote we work side by side with veterinarians to develop ultrasound systems that meet your needs.

The MyLab™ Panther adapts effortlessly to different clinical environments and animal species to tackle the unique challenges of veterinary diagnostics with unmatched quality.

Improve your practice with our high-end veterinary ultrasound platform – where performance meets productivity and where diagnostic confidence becomes second nature!



INTUITIVE CONTROL



A.I.-POWERED FUNCTIONS



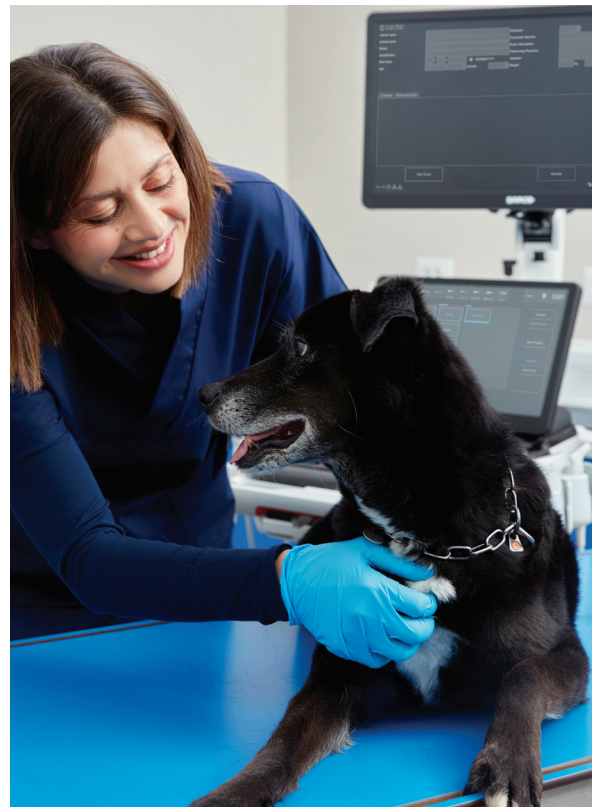
ADVANCED TAILORED TECHNOLOGIES



EFFECTIVE EXAMINATION TIME



DESIGNED FOR VETERINARIANS





24" OPTI-LIGHT BARCO MONITOR*

Latest LCD monitor technology for superior detail enhancement.



FULL ARTICULATED ARM WITH OPTI-LIGHT

Fully articulated design with optimal working environment based on integrated lightening capabilities.



ULTRAWIDE 15.6 TOUCHSCREEN

Ergonomic control with tiltable 15.6" touchscreen.



UNIQUE TOUCH INTERFACE

Innovative touch-sensitive interface to simplify gestures and cleaning.



5 ACTIVE CONNECTORS

5 transducer connectors for immediate probe switching in fast-paced clinical settings.



BATTERY SUPPORT*

Fast boot-up time and over one hour of full performance scanning with the system operating on battery.



3 YEARS WARRANTY

Essential protection to keep your investment running safely.

*Optional

Seamless Workflow Experience

As part of our ongoing commitment to quality veterinary care, we are focusing more and more on the demanding everyday lives of veterinarians. MyLab™Panther is designed to support your daily routine with its veterinary-specific software, automation and cutting-edge clinical tools.

With minimal settings adjustments, intuitive user interface and streamlined workflow, it reduces examination time, providing direct access to diagnostics. It's efficiency at the service of animal care.



FAST START

For each probe, species and clinical application, start the exam with the best settings with just a single click.

CUSTOMIZABLE INTERFACE

Modular and customizable interfaces, including annotations, measurements, and shortcuts, help to shorten the exam time, increasing productivity.

AUTOMATIC OPTIMIZATION

Adaptive B-Mode and color tools, such as eScan, AutoAdjust, and eDoppler, provide clearer images in any condition, especially in challenging examinations.

ASSISTED MANAGEMENT

easyMode and easyColor support agile preset optimization, in just a few seconds.

EASY REPORTING AND FOLLOW-UP

Integrated reporting capabilities support quick comparison of multiple exams – even acquired using different modalities.

MYLIBRARY

Embedded veterinary libraries provide direct access to imaging guidance, combined with live preview and anatomical references.

Choose Your Simplified Interface

With the MyLab™ Panther, you have the flexibility to choose between two different interfaces, depending on your preferred method of controlling the ultrasound platform and the environment you are working in.

Say goodbye to compromise and put your comfort first.



- ✓ Redesigned keyboard
- ✓ Comfortable typing experience
- ✓ Conventional trackball
- ✓ Streamlined workflow



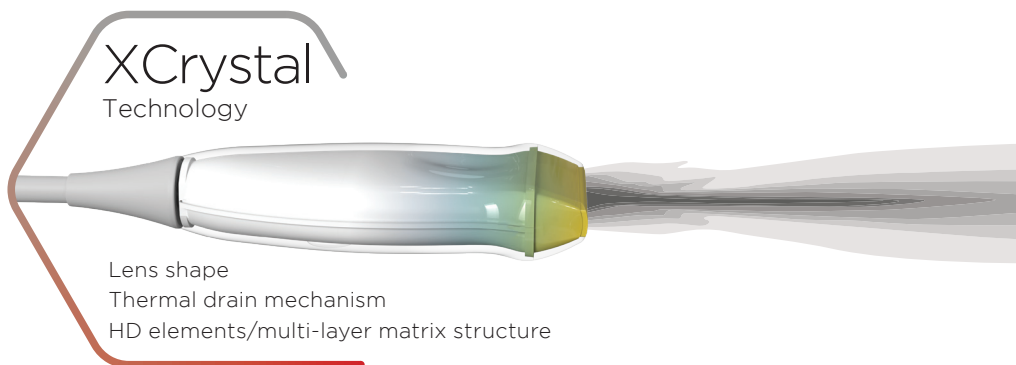
- ✓ Innovative design
- ✓ Easy to clean
- ✓ Built to last
- ✓ Resistant to corrosive agents
- ✓ Intelligent and comfortable touchpad

Illuminate Your Insights

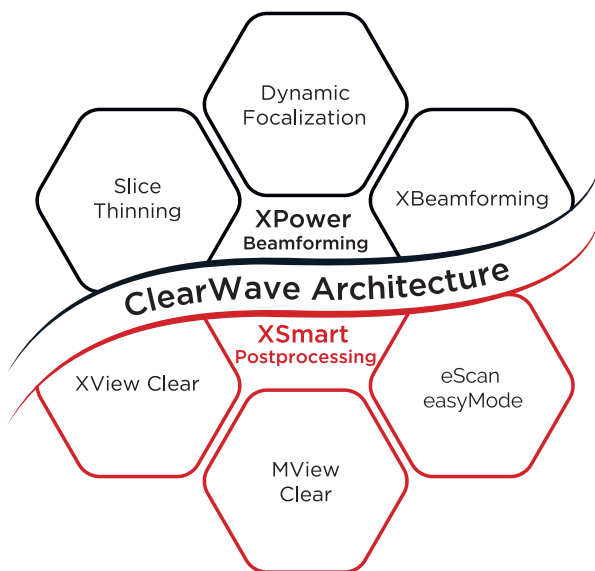
As a leading expert in probe manufacturing, we are constantly developing the technology behind our probes, to meet the changing needs of veterinarians.

With our commitment to continuous improvement, we invest in research and development to improve image quality, durability, and versatility.

Esaote XCrystal Technology, together with increased power capabilities and innovative probe hardware enhancements, has been designed to exceed your expectations achieving a superior level of detail.



MyLab™ Panther uses ClearWave Architecture, which combines Esaote's advanced XPower Beamforming and XSmart Postprocessing technologies to set a new benchmark for image quality standards.

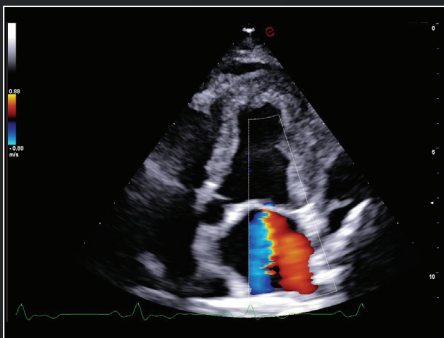


Make Every Beat Matter

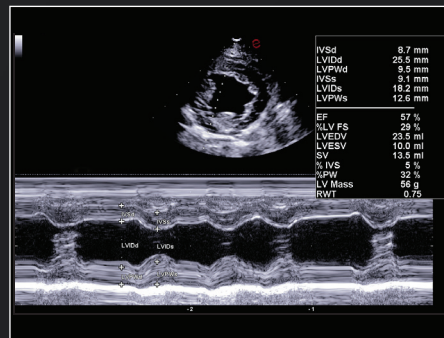
MyLab™ Panther offers cardiologists a complete set of tools for advanced cardiovascular diagnosis. Using the latest XCrystal Technology array from Esaote, it supports your knowledge and experience and helps you make fast and confident decisions.

Thanks to the exceptional image quality and Doppler sensitivity, your examinations are accurate and the diagnosis is precise.

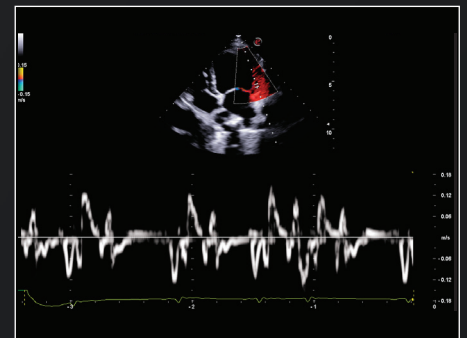
In addition, AI-powered automated measurements speed up workflow, minimize manual interventions and allow you to focus more closely on your patient and significantly increase productivity.



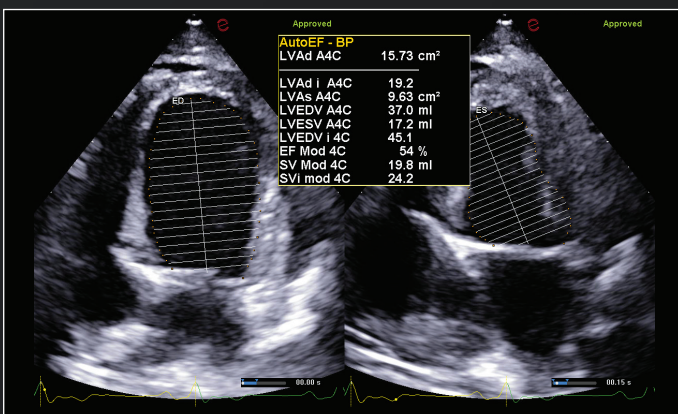
Canine, 4-chamber apical view - mitral valve regurgitation with CFM.



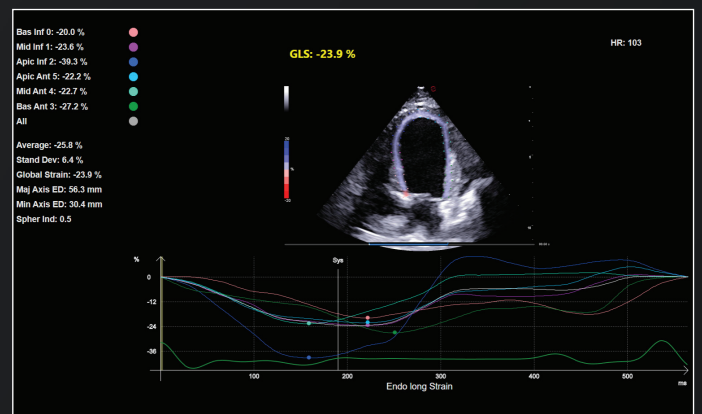
Canine, left ventricle short axis view - M-Mode.



Canine, 4-chamber apical view - Tissue Doppler study with TVM.



AutoEF calculation ensures the consistency and reliability of your measurements, minimizes variability, and increases the clinical utility for treatment decisions and monitoring patient outcomes.

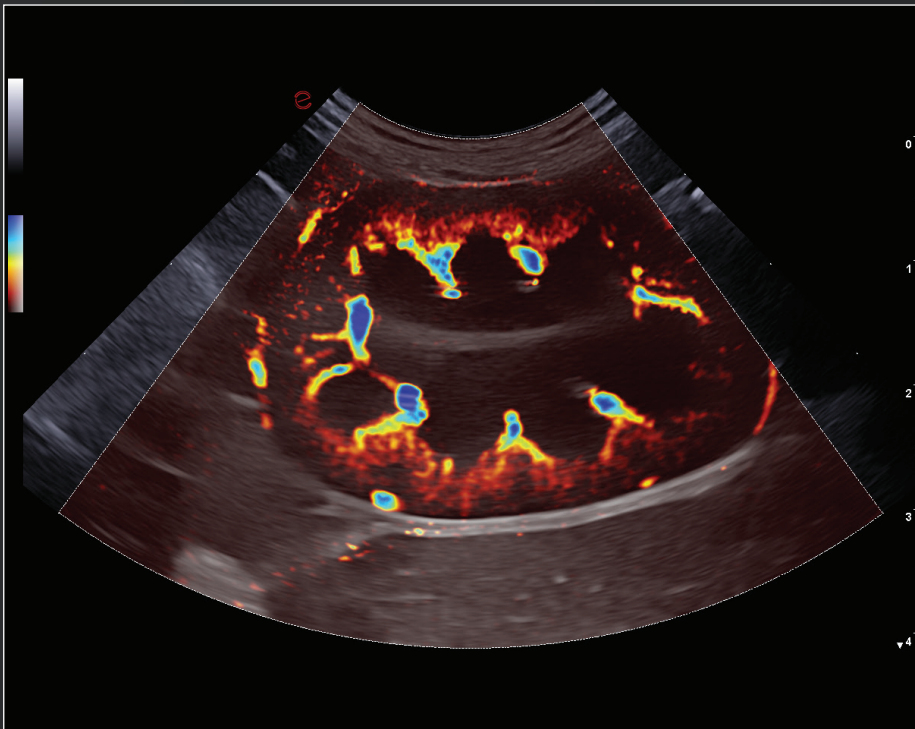


A comprehensive Strain package can help in the diagnosis and treatment of various cardiac conditions such as myocardial ischemia, cardiomyopathies, and heart failure. The simplified workflow with AI-supported automatic assessment of the left ventricle enables rapid assessment of myocardial deformation.

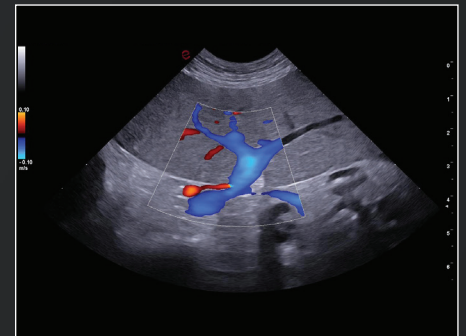
Get Clear and Accurate Answers

The most important prerequisite for a system to be considered expert is its image quality. This is why Esaote strives to deliver a high-quality image, where quality is synonymous with a high level of information and confidence.

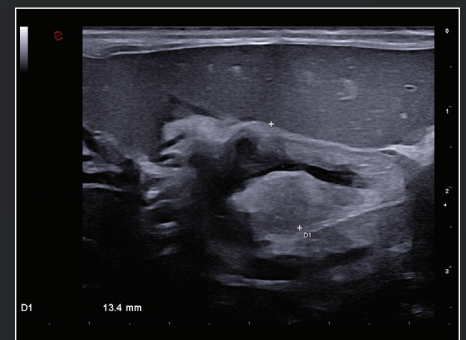
Advanced features such as real-time image optimization, quantitative elastonography, ultrasound contrast enhancement, and microvascularization assessment complete the system package and provide everything you need.



Canine, kidney - vascularization with microV.



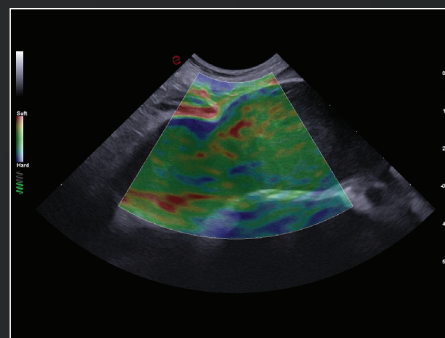
Canine, spleen - vascularization with CFM.



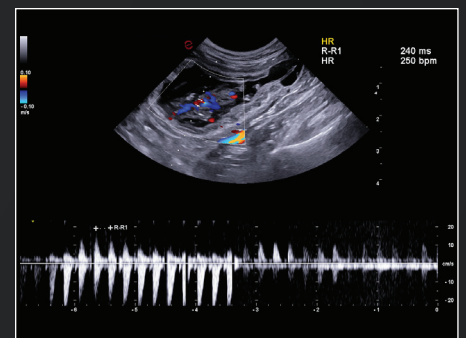
Feline, pathologic gallbladder.



Canine, intestine - layering study.



Canine, pathologic liver - stiffness assessment with ElaXto.

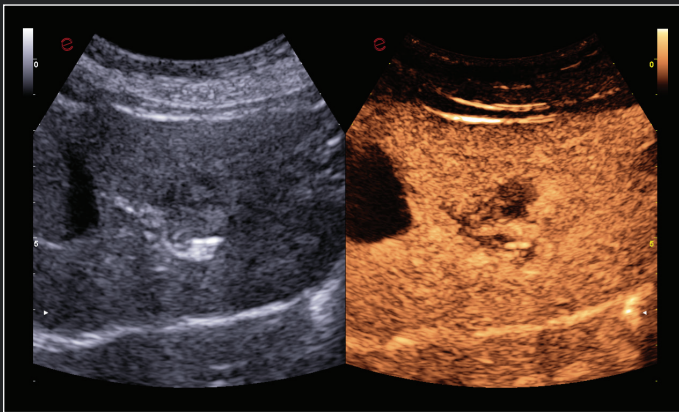


Canine, pregnancy - fetus heartbeat evaluation with PW.

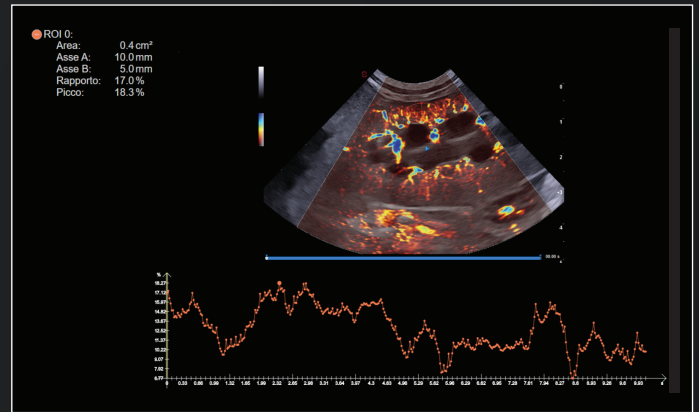
To improve diagnostic accuracy based on real-time visualization of tissue perfusion and vascularity, Esaote CnTI™ helps differentiate between normal and abnormal tissue, facilitating precise lesion characterization and therapy orientation.

With the support of QPack, you can obtain valuable quantitative data for diagnostic and therapeutic purposes.

This streamlined process increases efficiency and clarity, enabling you to make informed decisions quickly and optimize patient care effectively.

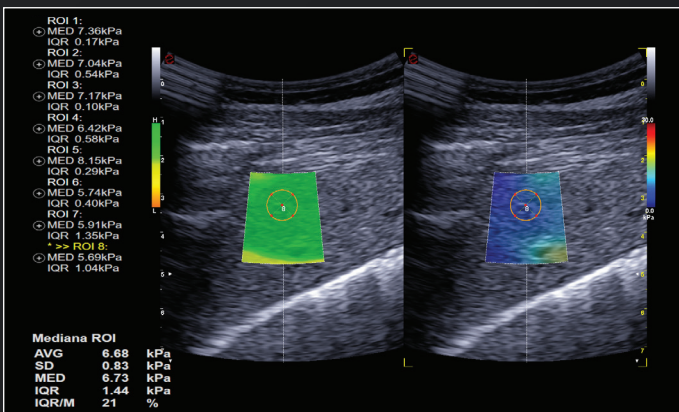


Canine, liver focal lesion – vascularization study with CnTI™.

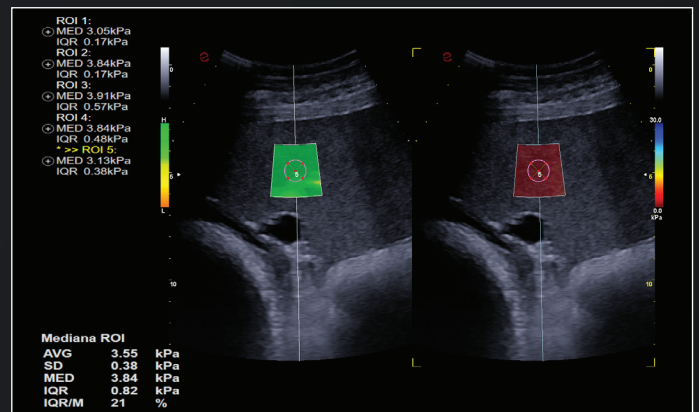


Canine, kidney – microvascularization evaluation with microV and QPack.

MyLab™ Panther, with QElaXto 2D, is equipped with shear wave elastography functions. With this non-invasive and quantitative assessment of tissue stiffness, you can facilitate the diagnosis and follow-up of various conditions such as liver health, muscle disease, and tumor characterization.



Equine, liver – stiffness quantification with QElaXto 2D.

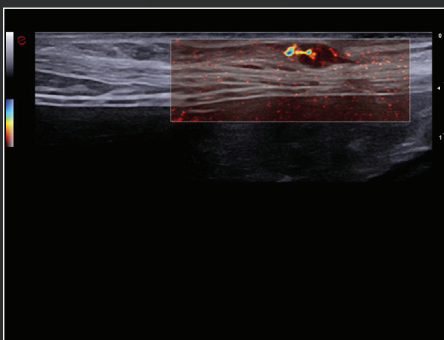


Equine, spleen – stiffness quantification with QElaXto 2D.

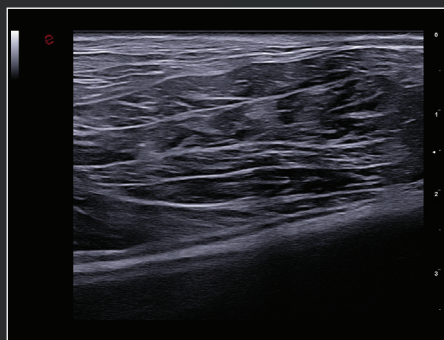
Experience Sharper Definition

Esaote's renowned high-frequency probes, specifically tailored for musculoskeletal examinations, provide exceptional detail and clarity for precise visualization of soft tissues, joints, and tendons.

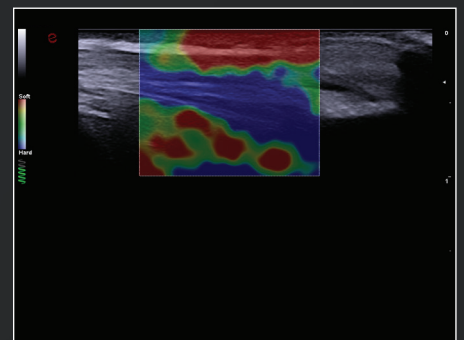
Superior resolution and penetration capabilities provide accurate assessment of all musculoskeletal and superficial, while microV allows you to assess any inflammatory condition.



Canine, lymph node - vascularization with microV.



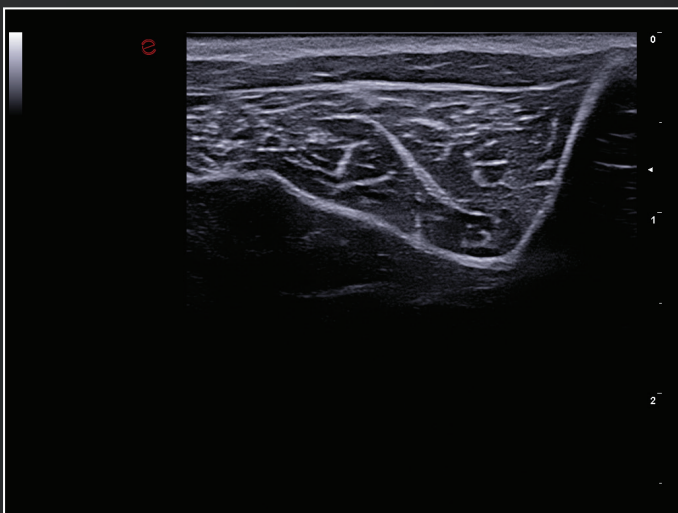
Canine, quadriceps femoris.



Canine achilles tendon - stiffness assesment with ElaXto.

As a benchmark for linear probe performance, we have paid particular attention to the design of our Very-High Frequency Hockey Stick probe.

As a member of the XCrystal probe family, the IHX 6-25 offers exceptional spatial resolution and makes managing precise imaging and precision to the sub-millimeter easier, with its flawless ergonomics.



Canine, shoulder - under 3 kg.



Feel Safe and Connected

With MyLab™Panther, we aim to offer added value that goes beyond the initial investment. With a three-year warranty and dedicated customer support, we ensure peace of mind for your financial commitment.

The MyLab™Panther features all the networking characteristics required to simplify data workflow and facilitate the sharing of clinical information, in any healthcare setting. Along with the ability to broadcast images for remote, real-time peer-to-peer collaboration and education, MyLab™Panther's Windows® 10 operating system delivers strong protection against external threats, guaranteeing patient data security.

MyLab™ DeskVET and its extensive reporting capabilities also give you the flexibility to manage and review exams on a laptop from anywhere, anytime.





esaote VET

160000512 Ver.01



Esaote S.p.A. - sole-shareholder company

Via Enrico Meloni 77, 16152 Genova, ITALY, Tel. +39 010 6547 1, Fax +39 010 6547 275,
info@esaote.com www.esaote.com

Windows® is a registered trademark of Microsoft Corporation. MyLab™ is a trademark of Esaote s.p.a. Technology and features are system/configuration dependent. Specifications are subject to change without notice. Information might refer to products or modalities not yet approved in all countries. Product images are for illustrative purposes only. For further details, please contact your Esaote sales representative.

Please visit us online
for more information



 Italian design 