

# MyLab™ E80

Expertise for Every Care



 **esaote**  
HEALTH WITH CARE

## Expertise for Every Care

The MyLab™E80 is meticulously crafted as an advanced ultrasound platform engineered to provide unparalleled expertise in examinations. Its primary goal is to seamlessly adapt to different clinical environments and provide you with reliable and accurate information. Maintaining consistency in advanced examinations is paramount to minimizing inter-operator bias between users. This is achieved through an intuitive workflow design and automation features enhanced by artificial intelligence. To provide the highest quality of information, the MyLab™E80 also has an extensive array of advanced features, positioning as a highly advanced ultrasound system.



 **INTUITIVE CONTROL**

 **A.I.-POWERED FUNCTIONS**

 **ADVANCED TAILORED TECHNOLOGIES**

 **EFFECTIVE EXAMINATION TIME**

 **24" OPTI-LIGHT BARCO MONITOR\***

Latest LCD monitor technology to ensure superior detail enhancement.

 **OPTI-LIGHT**

Optimal working environment through integrated lighting capabilities.

 **ULTRAWIDE 15.6 TOUCHSCREEN**

Ergonomic control with its tiltable 15.6" touchscreen.

 **2 CONTROL PANELS CONFIGURATIONS**

2 different interface options, conventional or cleanable, to fit with any working style.

 **5 ACTIVE CONNECTORS**

5 transducer connectors for immediate probe switching in fast-paced clinical settings.

 **BATTERY SUPPORT\***

Fast boot and more than one hour of full performance scanning with the system operating on battery.

 **3 YEARS WARRANTY**

Essential protection to keep your investment running safely.

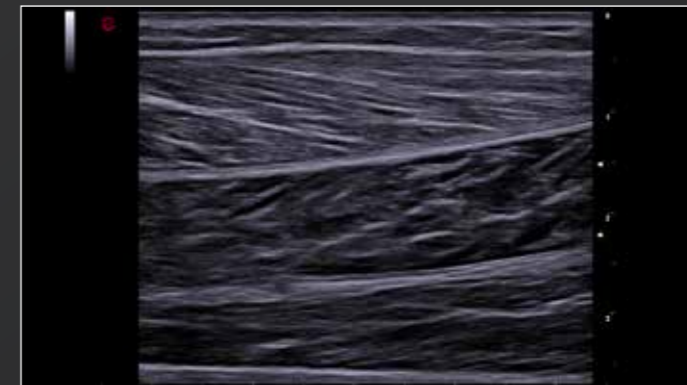
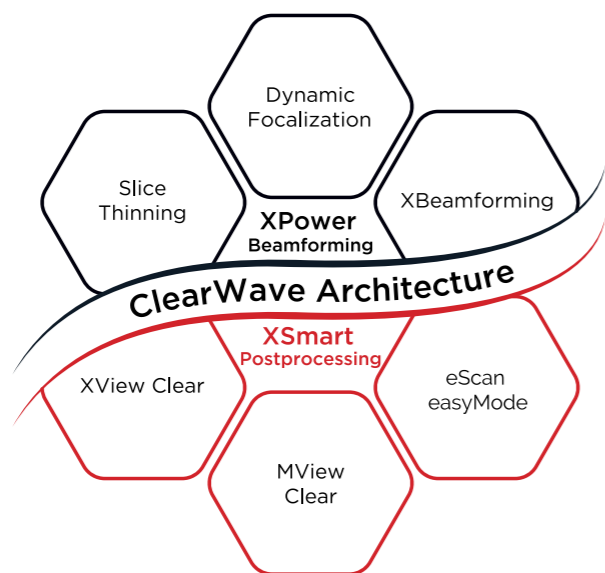
\*Optional



## Enhance your Expertise

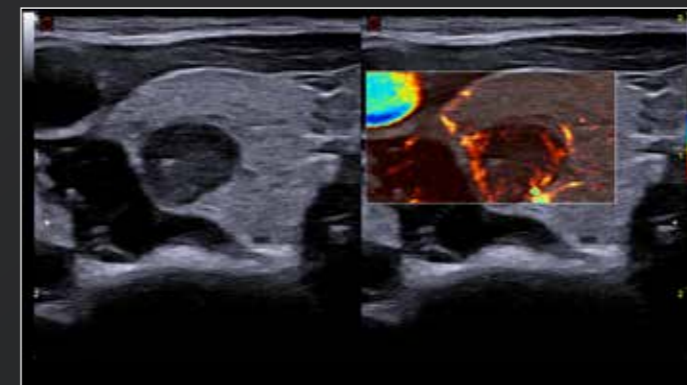
As part of our ongoing commitment to delivering high-quality healthcare, we are enhancing the reproducibility, efficiency and diagnostic accuracy of our ultrasound systems.

Ensuring consistency across different operators is a key point in patient care, which we have achieved through the use of automated artificial intelligence (A.I.) tools and solutions. Our A.I.-based approach aims to standardize daily tasks and simplify complex functions, which not only streamlines your workflows but also ensures consistent quality for all patients. The most important prerequisite among experts for a diagnostic imaging device is the image quality. We, therefore, strive to deliver a high quality image, where quality is synonymous with a top level of information and confidence. MyLab™E80 incorporates the ClearWave Architecture, which combines Esaote's advanced XBeamforming and XSmart Postprocessing technologies to set a new benchmark for image quality standards. Advanced features such as fusion imaging technology, liver disease assessment and auto-scoring of breast lesions complement the system package and provide you everything you might need.

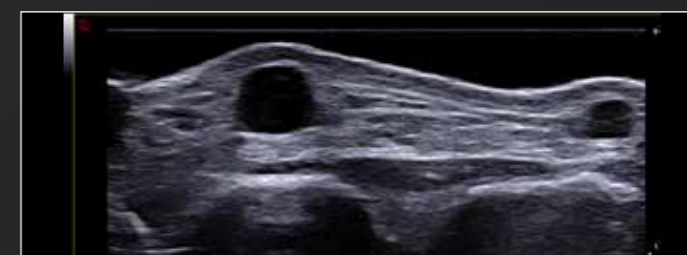


Equipped with a broad portfolio of very high-performance linear probes and advanced postprocessing capabilities, MyLab™E80 delivers excellent image quality. The superb resolution supports you with diagnosis and follow-up of patients with musculoskeletal diseases.

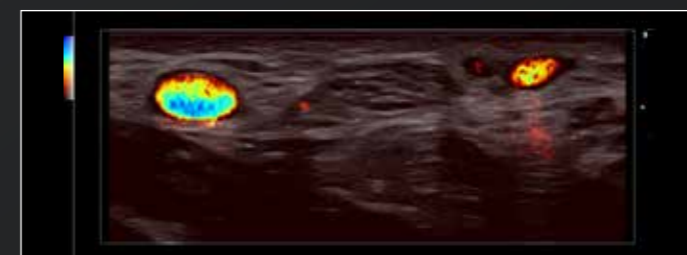
## Aiming for SUPERIORITY in superficial imaging



Our renowned Doppler technologies, including Power Doppler and microV, offer a very high level of sensitivity, delivering excellent quality blood flow information from large vessels and arteries to the smaller and slower microvascularization.



With a long-standing expertise in probes manufacturing, we have recently introduced a new Very-High Frequency Hockey Stick probe. The IHX 6-25 delivers outstanding spatial resolution while, due to its advanced design ergonomics, it facilitates the needle access to perform accurate interventional gestures with millimetric precision.



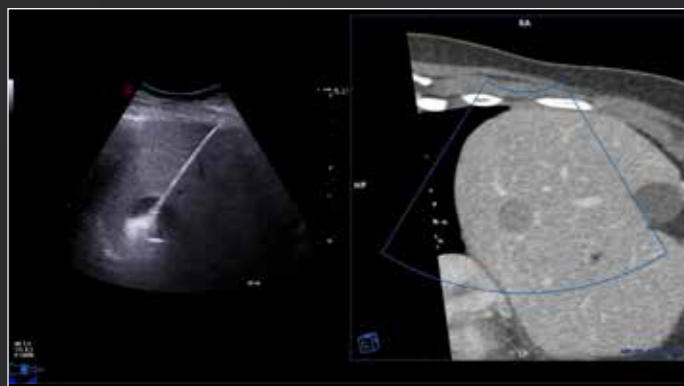


MyLab™E80 is powered by a latest-generation convex probe, with single crystal technology, and advanced post-processing functions. This combination delivers superior image quality in liver ultrasound examinations, from superficial to deep areas, and aids you in rapid decision-making. Esaote's renowned Doppler technologies, including CFM, microV, and BrightFlow, are designed to assist you in analyzing abdominal vascularization and characterizing suspicious areas.

## Striving for a COMPLETE approach to liver care



The MyLab™E80 integrates a comprehensive package of advanced features, including QElaxto 2D and QAI technologies, to facilitate the tracking of major liver diseases such as fibrosis and steatosis. Furthermore, all assessments are processed in a specialized report, presenting data using bar graphs or spider graphs.



Interventional procedures are streamlined with an array of tools designed to boost confidence and accuracy in gestures. CnTI™ facilitates improved lesion characterization, while the Virtual Navigator software enables multi-modality imaging with a simplified workflow, incorporating automation features such as 3D camera registration.



XView Clear MView Clear microV QElaxto 2D QAI LiverReport CnTI™ QPack VNav



Breast Interactive Workflow (BIW) is our newest touchscreen interface fully dedicated to breast examinations. It enables a direct access to measurements, bodymarks and lesions characterization. The MyLab™E80 embeds Breast Mass Analyser (BMA) and eDetect A.I.-based technologies which provide reliable evaluation of the suspected area (BI-RADS® scoring), with automatic lesion contouring and measurements.

## Offering STREAMLINED examinations for Women's Health

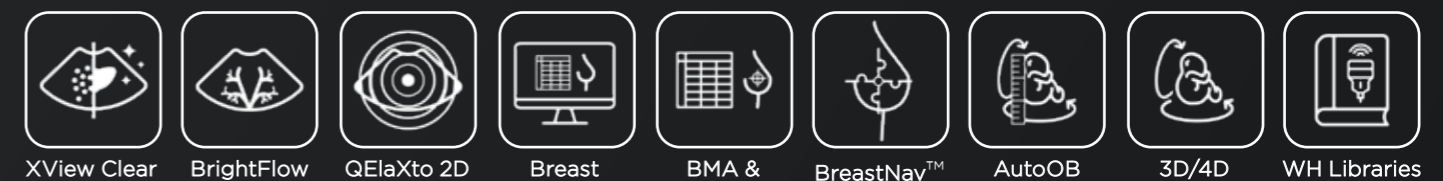


The MyLab™E80 provides you with outstanding image quality, using dedicated high-frequency convex probes. Moreover, a comprehensive A.I.-based package aims to facilitate the entire workflow from image acquisition to standardized measurements. BrightFlow feature, with its 3D-like appearance, leads to an easier and faster hemodynamic visualization.



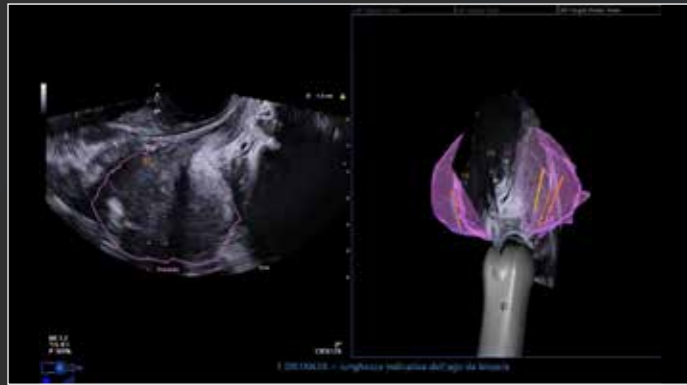
We prioritize the quality of our 3D/4D imaging in order to obtain a very detailed picture of the anatomical structures.

XLIGHT technology, with its realistic diffusion effects and shadows, emphasizes the anatomical details of the fetal face, while XGlass creates a very impressive transparency effect. Bone rendering is ideal to study the spine, TSI is suitable to accurately define curved structures such as the uterus while XSTIC improves the visualization of the fetal heart.



XView Clear BrightFlow QElaxto 2D Breast Interactive Workflow BMA & eDetect BreastNav™ AutoOB 3D/4D WH Libraries

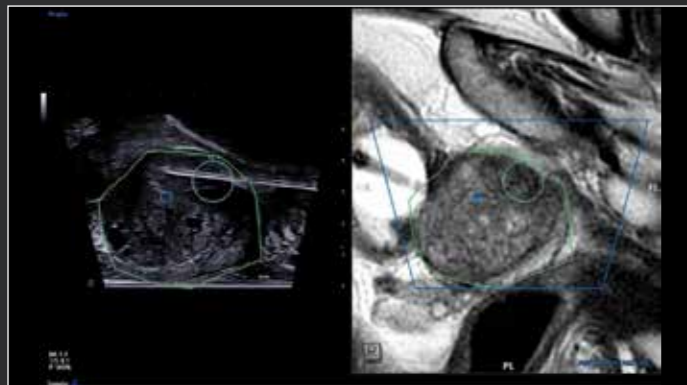




The MyLab™E80 remains at the forefront of urological diagnostics, offering a comprehensive solution for prostate imaging that supports both transperineal and transrectal approaches.

It ensures exceptional image quality complemented by various technologies such as vascularization and contrast imaging, as well as elastography techniques to meet the highest standards for diagnostic accuracy.

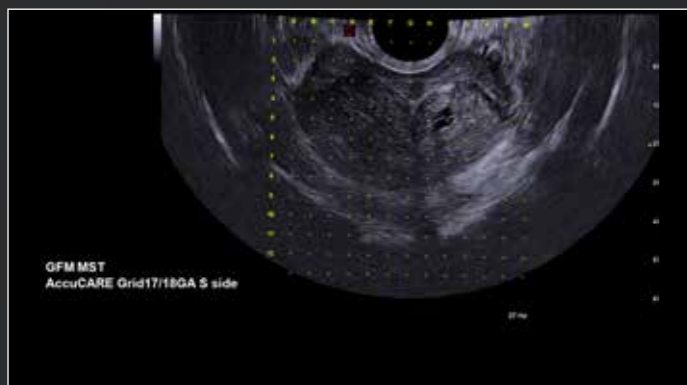
## Focusing on an AUGMENTED urologic package



With UroFusion, Esaote's state-of-the-art fusion imaging solution tailored for targeted prostate biopsies, you can achieve a higher level of simplicity and accuracy.

Leveraging Augmented Insight™ (A.I.) technology, this system optimizes workflow efficiency through automated MR and real-time US segmentation and synchronization.

In addition, UroFusion enables prostate segmentation for better mapping of systematic biopsies.



The MyLab™E80 extends the capabilities of the urology package through compatibility with various steppers for interventional transperineal procedures, that can be also seamlessly integrated into the UroFusion environment.

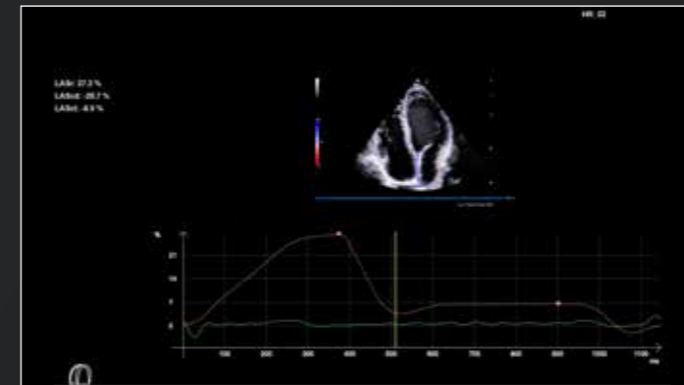


XView Clear microV QElaxto 2D CnTI™ UroFusion UroReport Stepper TR TP

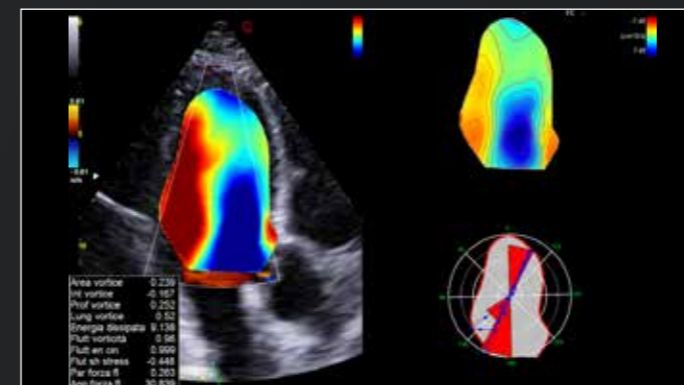


Utilizing Esaote's latest XCrystal technology array, MyLab™E80 provides exceptional image quality for various cardiovascular examinations, in both B-Mode imaging and Doppler investigations. Additionally, A.I.-powered auto measurements expedite workflow, minimizing manual interventions and allowing you to increase the focus on your patient.

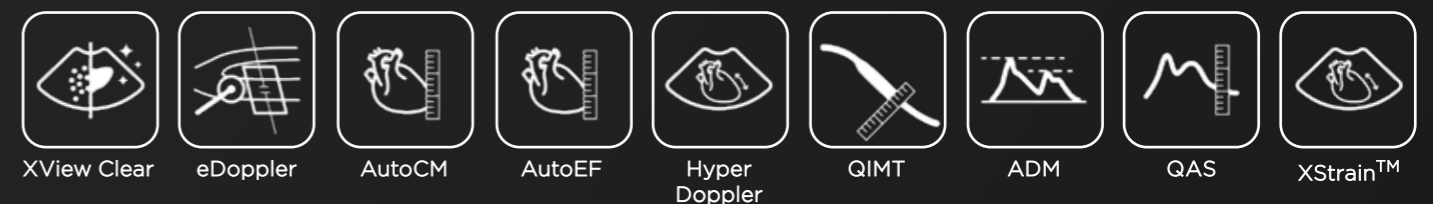
## Providing an ADVANCED cardiovascular package



A comprehensive strain package can aid in diagnosing and managing various cardiac conditions such as myocardial ischemia, cardiomyopathies, and heart failure. The simplified workflow, incorporating A.I.-powered automatic assessment for the left ventricle, allows for rapid evaluation of myocardial deformation in the LV, RV, and LA.



HyperDoppler technology, available on the MyLab™E80 ultrasound system, offers a significant advancement in cardiovascular assessment by analyzing velocity vectors with diverse directions and amplitudes. By providing exclusive insights into left ventricular fluid dynamics, HyperDoppler enhances diagnostic approach and facilitates a deeper understanding of cardiac function.



XView Clear eDoppler AutoCM AutoEF Hyper Doppler QIMT ADM QAS XStrain™

## Choose your Simplified Interaction

With the MyLab™E80, you have the flexibility to choose between two different interfaces based on your preferred method of controlling the ultrasound platform and your operating environment. You can select either a redesigned conventional panel aimed at reducing stress and enhancing efficiency, or an innovative touch-sensitive interface that simplifies cleaning and seamlessly integrates into critical environments. This adaptability ensures optimal comfort during examinations. Whether you opt for the sleek and elegant conventional panel or the modern touch-sensitive interface, both provide direct access to the desired functions, facilitating effortless control of the MyLab™E80. These two user-friendly interfaces are appreciated by users from all backgrounds.

- ✓ Innovative design
- ✓ Easy to clean
- ✓ Built to last
- ✓ Resistant to corrosive agents
- ✓ Intelligent and comfortable touchpad



- ✓ Redesigned keyboard
- ✓ Comfortable typing experience
- ✓ Conventional trackball
- ✓ Streamlined workflow

## Succeed in any Clinical Setting

MyLab™E80 is meticulously designed to fit into any healthcare settings. With its five probe connectors and customized configurations, it assists you in both routine and advanced practices. The battery support allows for autonomous scanning at full performance, while the modern touch panel simplifies cleaning procedures, ensuring adaptability even in the most demanding environments.





# Let Augmented Insight™ Assist Reproducibility

With MyLab™E80, we aim to reduce variability among operators, ensuring consistent information for all clinicians. MyLab™E80 achieves this through simplified protocols for its advanced functions, further enhanced by Artificial Intelligence to provide a high level of confidence in the information delivered.

With this in mind, we have optimized A.I. capabilities by incorporating Augmented Insight™ technologies, which encompass many A.I.-powered solutions developed by the Research and Development Department at Esaote, to simplify your workflow and support you during your ultrasound examination.

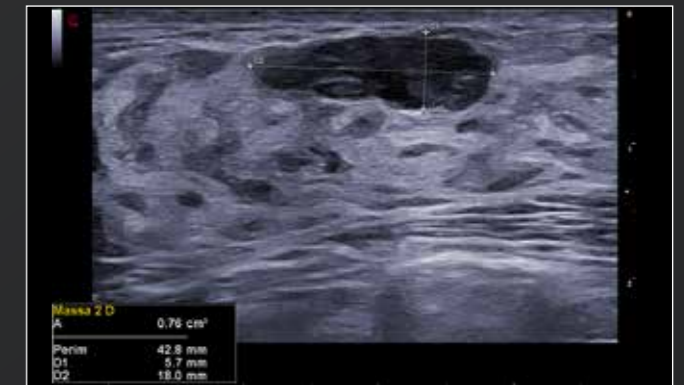


## Urology



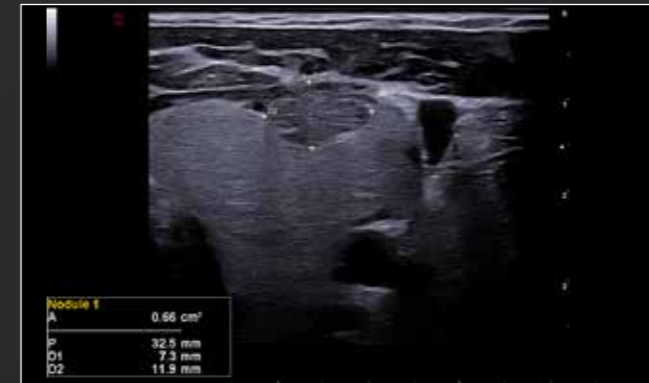
By fixing new standards in urology, MyLab™E80 embeds UroFusion technology, Esaote's ultimate A.I.-driven workflow solution for prostate navigation. Easy procedures and increased confidence as a result of US and MRI prostate segmentation and automatic registration.

## Breast



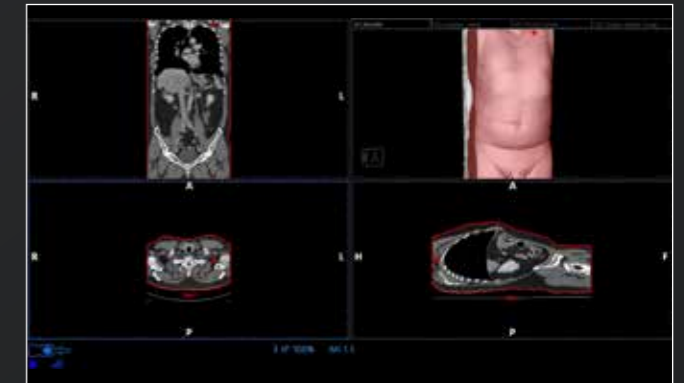
Driven by Artificial Intelligence, Breast Mass Analyser (BMA) and eDetect technologies help you to easily segment and reliably evaluate suspected areas in the breast with BI-RADS® scoring.

## Thyroid



MyLab™E80 proposes automatic contouring and cross-dimensions of thyroid's masses in suspicious areas (ROI) that you will have suggested.

## Abdominal



MyLab™E80 is equipped by LiverFusion technology to enable easy fusion imaging and support interventional procedures. The A.I.-powered automatic segmentation of the skin profile, associated to a 3D camera, makes the abdomen registration even faster.

## Cardiology



With the aim of increasing speed in standard cardiovascular measurements, MyLab™E80 embeds new workflow solutions, such as AutoEF, offering automatic A.I.-based contouring of the left ventricle in 4 and 2 chambers to assess ejection fraction, and XStrain™, enabling zero-click detection of endocardial border profiles in the LV.

## Obstetrics



With its 360° shared-service solution, MyLab™E80 introduces A.I. in women's health applications. Auto scanplane recognition, combined with AutoOB technology, facilitates the workflow in fetal biometric measurements.



# MyLab™E80 in Action

MyLab™E80

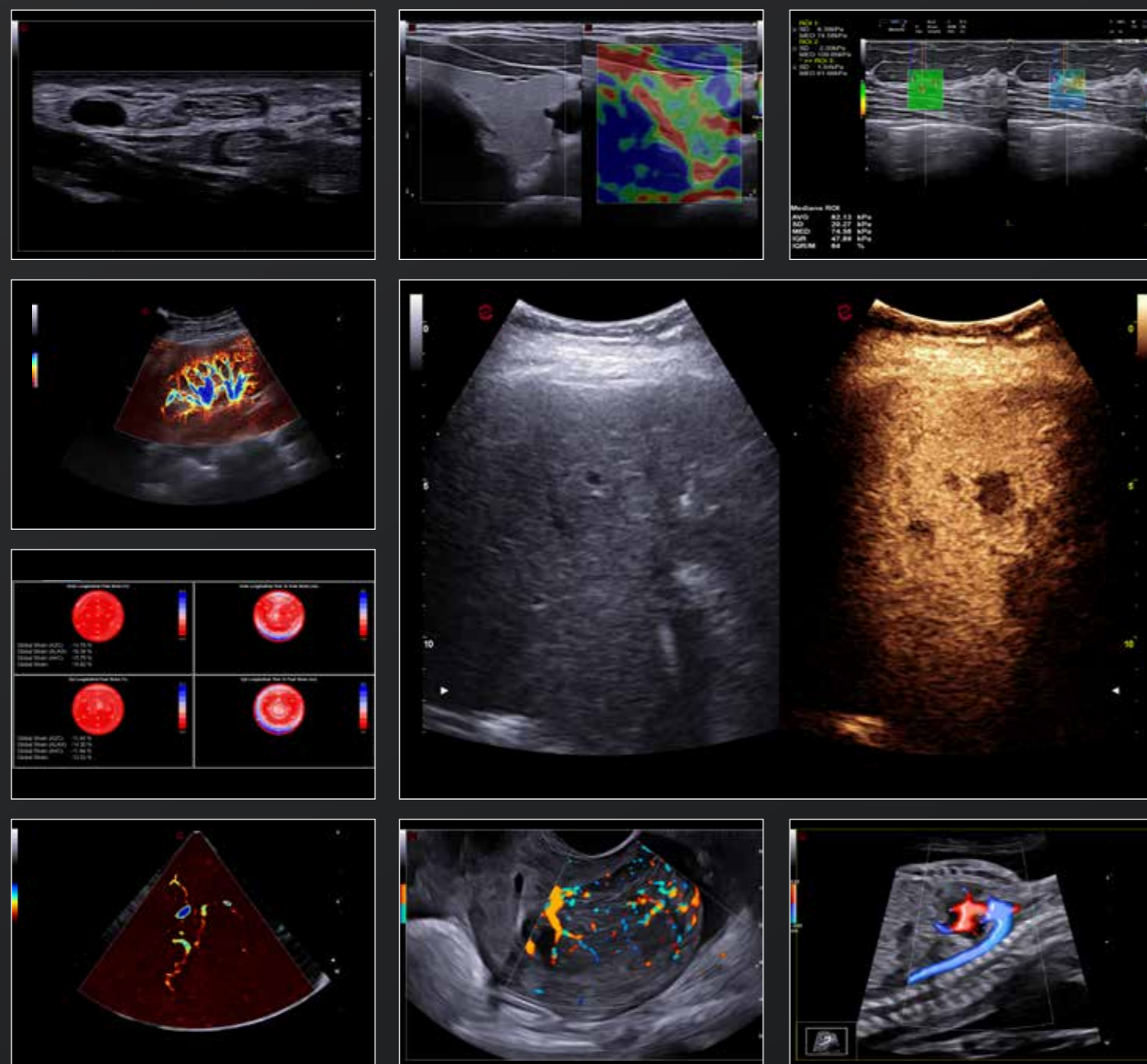
## Gain Peace of Mind

With MyLab™E80 Esaote aims to offer added value that goes beyond the initial investment. With a three-year warranty and dedicated customer support, we ensure that the financial commitment is optimized and supported throughout its lifetime.

Furthermore, the device has all the networking characteristics required to simplify data workflow and facilitate the sharing of clinical information, in any healthcare setting.

Along with the ability to broadcast images for remote, real-time peer-to-peer collaboration and education, MyLab™E80's Windows® 10 operating system delivers strong protection against external threats, guaranteeing patient data security.

Whether you are a hospital manager or a healthcare professional, MyLab™E80 will appeal to you for its design, which combines robustness, efficiency, precision, and reliability, while offering the most advanced technologies to enable the latest ultrasound diagnosis tools.







Esaote S.p.A. - sole-shareholder company

Via Enrico Meloni 77, 16152 Genova, ITALY, Tel. +39 010 6547 1, Fax +39 010 6547 275,  
info@esaote.com - www.esaote.com

MyLab™ is a trademark of Esaote spa. Windows® is a registered trademark of Microsoft Corporation. CnTI™: The use of Contrast Agents in the USA is limited by FDA to the left ventricle opacification and to characterization of focal liver lesions. BI-RADS® incorporates the Breast Imaging Reporting and Data System ATLAS of the American College of Radiology, Copyright 1992, 1993, 1995, 1998, 2003, and 2013. The developer of this product is independently owned and operated, and is not an affiliate of the American College of Radiology. The American College of Radiology is not responsible for the contents or operation of this product or its associated software, and expressly disclaims any and all warranties and liabilities, expressed or implied, in connection therewith. BreastNav™ is powered by Medcom GmbH. BMA is powered by Deep Trace Technology. Technology and features are device/configuration-dependent. Specifications subject to change without notice. Information might refer to products or modalities not yet approved in all countries. Product images are for illustrative purposes only. For further details, please contact your Esaote sales representative.

Italian design

160000510 Ver.01

Please visit us online  
for more information

