

MyLab<sup>TM</sup>Omega VET

# Top Performance, Compact Design



NEVER STOP ELEVATING YOUR VET EXPERIENCE.





Dedicated VET software and probes



Two socket connectors



Large dedicated VET probe portfolio - up to 22 MHz



Fast and Easy



Highly responsive capacitive touchscreen



Multimodality archive



Complete advanced clinical tools



Extended connectivity



Wireless option



Pivoting 15.6" monitor



Windows® 10



MyLab™ Tablet



On-board DVD



DICOM connectivity (including Query/Retrieve)



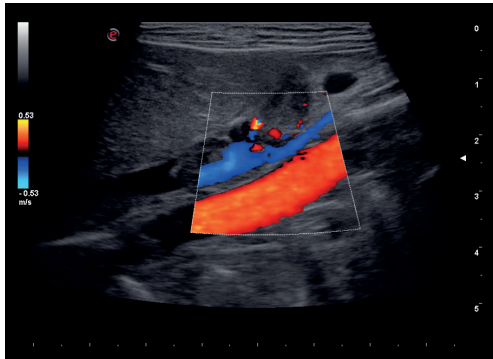
@Streaming

# Advanced tools to help you in everyday clinical practice

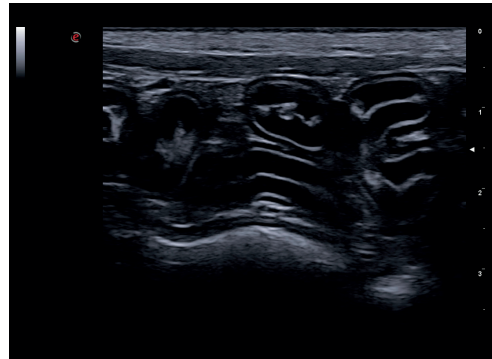
Esaote's **MyLab™OmegaVET** is the premium portable system which is easy to carry with you everywhere and is designed to reach the highest level of diagnostic efficiency.



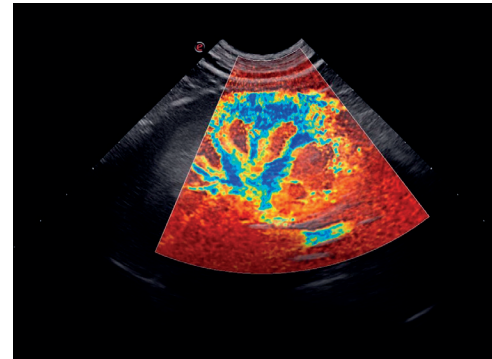
# Image quality straightway



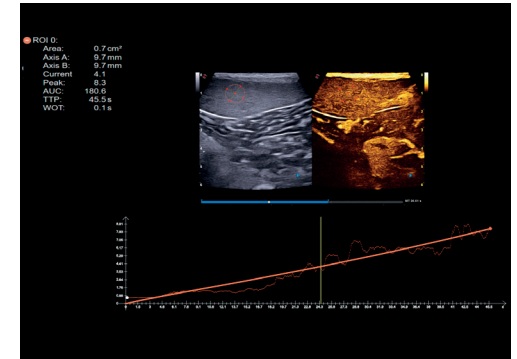
**AutoAdjust** - automatic adjustment of Imaging, CFM and Doppler parameters at the press of a button



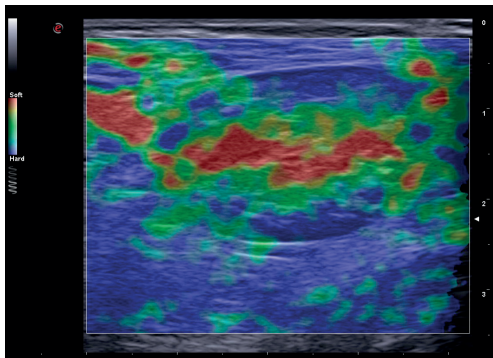
**XView+** - speckle artifacts reduction



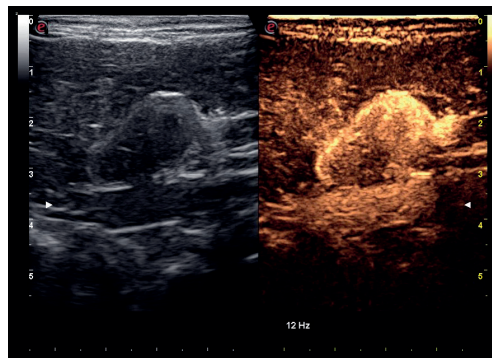
**microV** - high sensitivity and spatial resolution hemodynamic evaluation for tissue perfusion



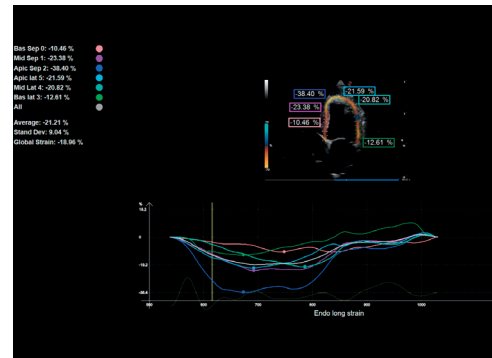
**QPack** - multimodality quantification tool for CnTI™, Color & Power Doppler



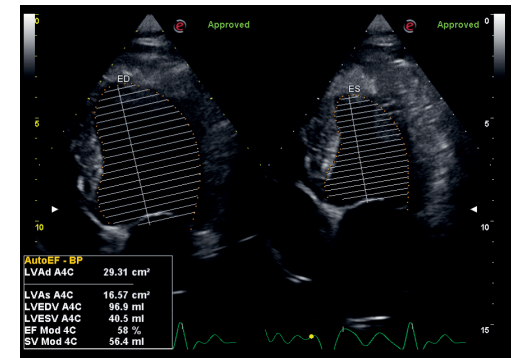
**ElaXto** - real-time non-invasive assessment of tissue elasticity



**CnTI™** - advanced technology for Contrast Enhanced Ultrasound (CEUS) imaging



**XStrain™** - endocardial velocity quantification & heart deformation detection



**Zero-click AutoEF** - automatic ejection fraction computation



**esaote**  
www.esaote.com



Esaote S.p.A. - sole-shareholder company  
Via Enrico Melen 77, 16152 Genova, ITALY, Tel. +39 010 6547 1, Fax +39 010 6547 275, info@esaote.com

MyLab is a trademark of Esaote spa. - Windows® is a registered trademark of Microsoft Corporation.  
Technology and features are system/configuration dependent. Specifications subject to change without notice. Information might refer to products or modalities not yet approved in all countries. Product images are for illustrative purposes only.  
For further details, please contact your Esaote sales representative.



Please visit us online  
for more information